

NEW!

TWIST



W.AG
**FUNKTION +
DESIGN**

DESIGN meets FUNCTION.



Case solutions for your success.

www.wag.de

TWIST – Modern design case with innovative functions



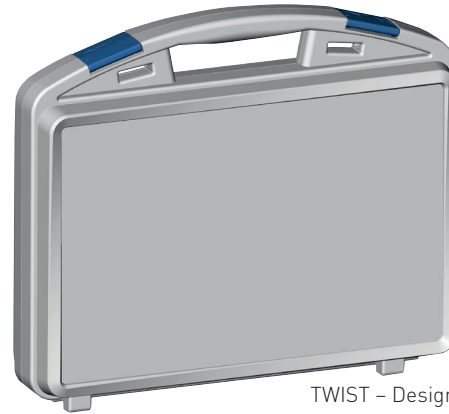
Konrad Goldbach,
CEO
W.AG Funktion + Design GmbH

The tasks and requirements for the plastic cases and boxes from W.AG are manifold. In addition to a professional product presentation and an optimum product protection through individual case inserts there is another primary intention in the foreground:

The case presentation in the corporate design of the customer! It is important to ensure that the case, by its individual design language, supports the customer's brand and reduces its own profile as a package in order to guarantee for the customer the best possible communication. Therefore, we have made it our mission to create a case which meets these requirements and which embodies our pursuit of an attractive and modern design with high functionality. **Introducing: The TWIST.**

Namesake of our brand new plastic case is the patent pending TWIST stacking frame, which represents an absolute innovation in plastic cases. The modern and minimalist design with a surrounding style frame gives the TWIST an unmistakable and „cool“ look, which has no equal. Being equipped with optional features that support and extend the capabilities of the case immensely the TWIST represents another milestone in our quest to develop the perfect plastic case.

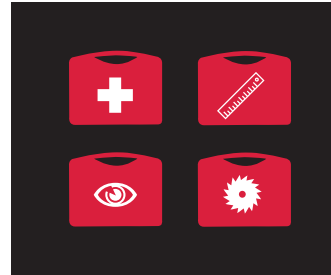
„Twist“ your product presentation and brand communication and convince yourself of its strengths as an innovative and attractive plastic case of the next generation.



TWIST – Design meets Function



04 | TWIST – DESIGN meets FUNCTION



06 | Industry solutions



10 | TWIST details



12 | TWIST features



14 | In-mould labelling



15 | Screen- / pad-printing



16 | Inlays



17 | Dimensions & colours



18 | About us

TWIST – DESIGN meets FUNCTION

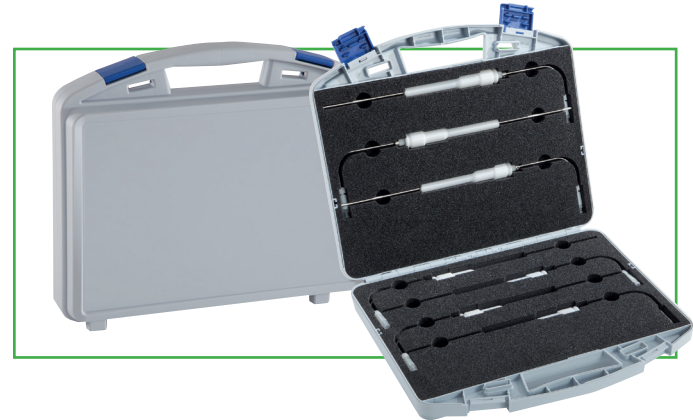


The guiding principle of every case development by W.AG is dominated by the question: „What is the next step in case evolution?“ The goal of W.AG was a packaging solution that embodies a perfect symbiosis between puristic design with distinctive features and a plurality of functions.

TWIST's design is characterised by cool elegance and modern minimalism and therefore represents an attractive packaging solution with a wide range of applications for a wide range of industries.

Its modern design awards each TWIST a positive „eyecatcher“ image: It grabs the viewer's attention immediately and is conspicuous by being strongly attractive. The innovative TWIST-stacking framework characterises with its twists the most formative style element of the attractive design case.

With a particularly large-sized decoration area the TWIST is predestined for full-surface imaging in the IML process and provides the customer with optimal opportunities for product and brand communication. The interior of the TWIST has been optimised by our case and foam designers for case inlays so that maximum utilization of the interior space has been ensured. All these facets make the TWIST ... Innovative. Shapely. Unique.



TWIST

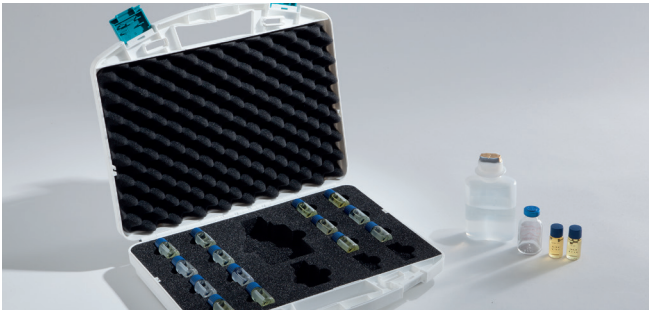


W.AG
FUNKTION +
DESIGN





Medical Technology / Pharmaceutical / Dental



Medical instruments and products from medical and dental technology require a packaging solution with optimum product protection. TWIST provides this reliable protection and largely dispenses in the light-weight construction with small radii, irritating ribs and indentations. This ensures a quick and easy wipe-disinfection and makes the TWIST an ideal tailored solution for these industries' packaging. TWIST also scores in the pharmaceutical industry in combination with individual inlay solutions that offer a high degree of user-friendliness in terms of removal and packing of case contents.



Delicate, high-quality measuring instruments and optical devices require an especially robust „companion“, which has a high degree of function and design. TWIST embodies, alongside these specialities, a plastic case with high product protection and convenient handling in daily use. The optional put-up hinge represents an ideal supplement and offers a high degree of usability. The optimised interior geometry in DIN A4 format gives your products enough room and allows optimum use of space with the use of custom-made case inlays.



Advertising / Promotion / Presentation



Looking for an attractive design case for your quality toys, your merchandising articles, seminar materials, educational games etc.? Then TWIST is the ideal partner for your product and service presentation because of its design and features! With its minimalist design it accelerates your brand and your product to the forefront: Whether externally, with individual colouring and printing, or internally with the professional case inserts, which can be customised with laser engraving of your branding and your product information.



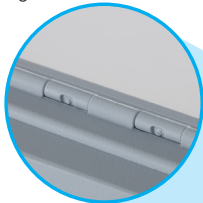
Craftsmen and service technicians need „mobile colleagues“ that enable a reliable and comfortable transportation of tools, machine parts and power tools. The ergonomic handle of the new TWIST case in A4 size offers pleasant handling. If required, the TWIST can be equipped with a click-on shoulder strap, which enables a comfortable carrying of the case. The striking design of TWIST with its rounded edges prevents injuries, so that the TWIST is an ideal companion for mobile applications. Combined with individual foam and/or deep-drawn inserts the TWIST also ensures reliable protection of the case contents.

TWIST details

Design integrated and secure locks

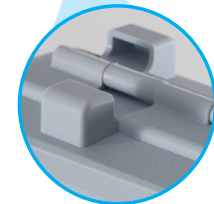


Durable and integrated plug-in hinges

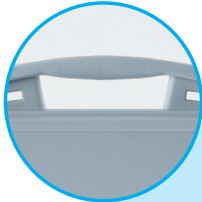


Puristic design with distinctive „coolness“

Stable and sturdy case feet



Ergonomic and pleasant carrying handle



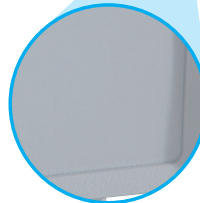
High gloss or roving textured surface



Rounded corners prevent injuries and damage to sensitive surfaces



Optimal surface protection via stepped surface and TWIST-stacking frame



Innovative **TWIST-stacking function**

Interlocking „TWIST-effect“ for safe stacking



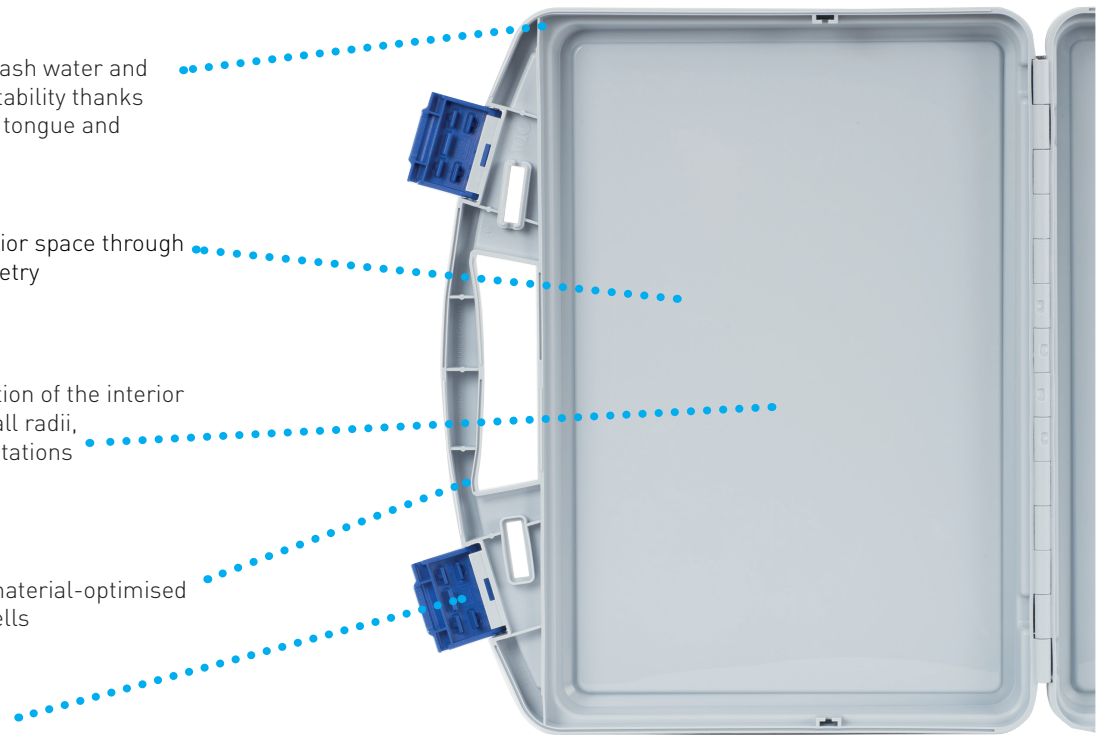
▶ Protection against splash water and dust as well as high stability thanks to the circumferential tongue and groove system

▶ Maximum use of interior space through optimal interior geometry

▶ Optimal wipe disinfection of the interior space by avoiding small radii, irritating ribs or indentations

▶ High stability due to material-optimised design of the case shells

▶ Integrated and sturdy case locks



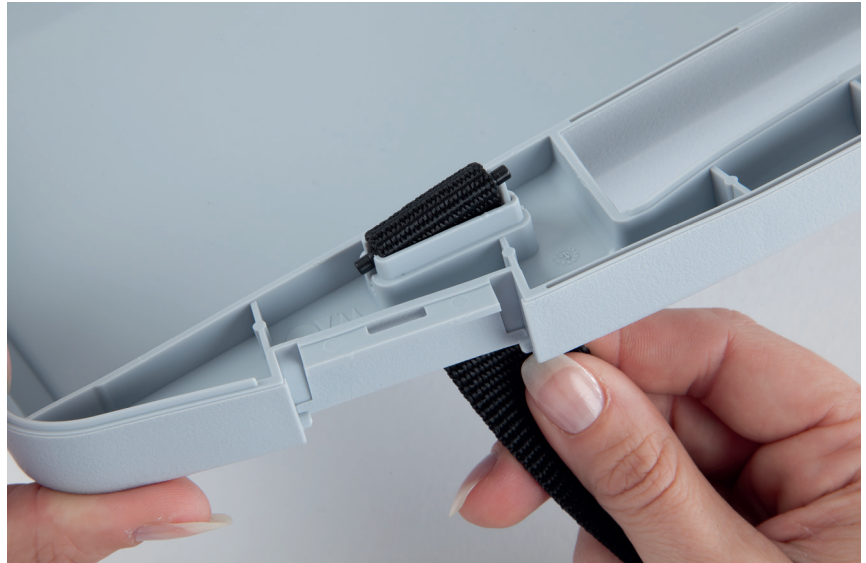
TWIST features

Round off your product and brand presentation with the TWIST features:



TWIST can be equipped with an **optional shoulder strap**.

The **shoulder strap** is the perfect complement for mobile use and can be fitted to your TWIST on request.



The strap can be easily and quickly clicked onto the mountings with the quick-release pins.

Customised logo
possible **in locks**



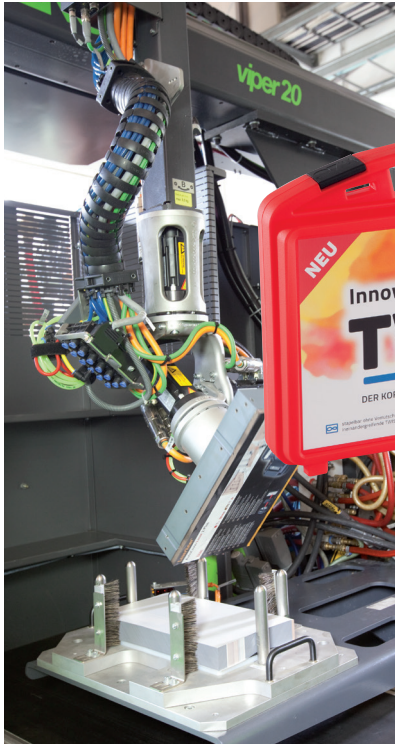
An optional **embossed logo** in the case locks completes your professional brand communication and ensures the first brand experience when opening the case locks.

Optional put-up hinge

The useful **put-up hinge** is the ideal assistance for a professional presentation of your case contents. Easily clicked and stable in the retainers, it holds the TWIST securely open and is especially appropriate for use as a presentation case.



In-mould labelling (IML)



Due to its large decoration area, the TWIST is ideal for the in-mould labelling process. Its minimalist design puts the TWIST discreetly into the background, thereby bringing your complete surface IML imaging prominently into the foreground.



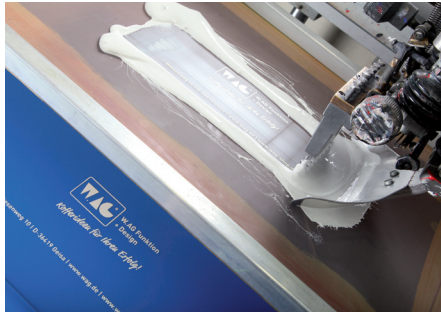
IN-MOULD LABELLING

- ▶ Modern decoration method in brilliant photo quality
- ▶ The offset printed PP-foil in photographic quality is inserted in the injection mould by the machine handling. Foil and packaging merge during the injection moulding process.
- ▶ High protection against UV light and abrasion
- ▶ Moisture- and temperature-resistant
- ▶ Environmentally friendly since fully recyclable

Screen printing and pad printing



W.AG
FUNKTION +
DESIGN

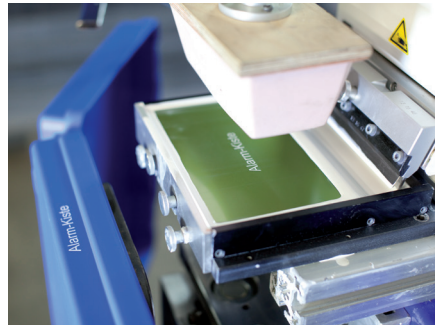


SCREEN PRINTING

- ▶ High quality and durable decoration process
- ▶ Your logo, slogan or product designation can be printed with high colour force
- ▶ Doable in high gloss or roving textured surfaces
- ▶ One colour- or multicolour-printing is possible

PAD PRINTING

- ▶ Individual pad printing for TWIST is possible
- ▶ Individual locks and individual design of the case's sides
- ▶ Alignment of the case to your corporate identity down to the last detail



Inlays

Foam inlays

The foam inlays produced by W.AG are designed in its shape, foam quality and processing technology according to the products to be packed. W.AG unifies the prime machining methods milling, water jet cutting and punching in-house. Thus, you receive the optimal matching solution for your product and demands. During the development of the TWIST our case and foam designers had already conceived an interior geometry that allows an excellent use of interior space and an optimal use of materials for individual case inlays.



●●●● = high
 ●●● = middle
 ● = low



► PU-soft foam

► PE-hard foam

► deep-drawn inserts

	PU-soft foam	PE-hard foam	deep-drawn inserts
compressive strength	●	●●●●	●
resistance to high temperatures	●●●●	●●	●
resistance to low temperatures	●●	●●	●●
solvent resistance	●	●	●●
light resistance	●	●●	●
acid resistance	●	●	●
flammability	●●●*	●●●*	●
water repency	●	●●●●	●●●●
sound absorption	●●●●	●	●●
harmlessness to health	●●●●	●●●●	●●●●
shock resistance	●●	●●●●	●

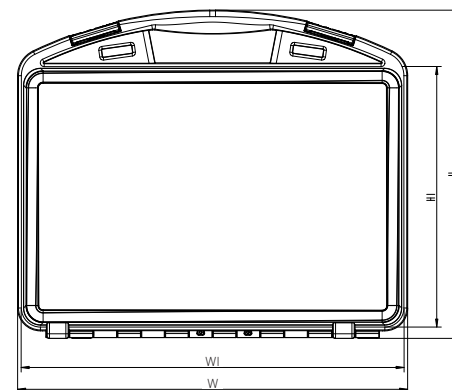
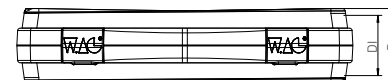
* In consideration of the applied testing methods, foams equipped with special additives can achieve flame retardent properties.

Dimensions and colours



W.AG
FUNKTION +
DESIGN

article	exterior dimensions (WxHxD)	interior dimensions (WixHixDi)	format
TWIST 9322	338 x 265 x 74 mm	320 x 215 x 60 mm	DIN A4
TWIST 9324	338 x 265 x 104 (37/67) mm	320 x 215 x 90 (30/60) mm	DIN A4
TWIST 9326	338 x 265 x 134 mm	320 x 215 x 120 mm	DIN A4



standard colours: black, blue, silver-grey, anthracite, red, yellow, dark blue, transparent

locks: black, blue, silver-grey, anthracite, red, yellow, dark blue

selection colours: available on request

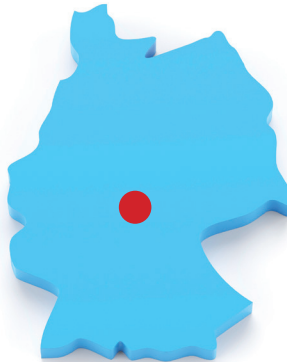
accessories: put-up hinge (optional), shoulder strap (optional)

material: polypropylene (PP)

About us | W.AG - Your strong partner



W.AG Function + Design GmbH was founded in 1992 and currently employs 125 employees at its headquarters in Geisa. As one of Europe's leading case manufacturers W.AG develops, manufactures and sells innovative plastic cases and boxes „Made in Germany“, and with its extensive in-house expertise offers a wide range of services.



Convince yourself of our in-house skills and values!

- ▶ Innovative product portfolio and unique range
- ▶ Customisation and implementation of customer requirements
- ▶ Quality and reliability - „Made in Germany“!
- ▶ Environmental protection and sustainability



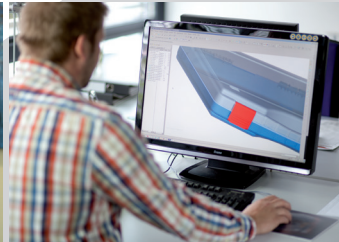
In-house expertise of W.A.G



IN-HOUSE
EXPERTISES



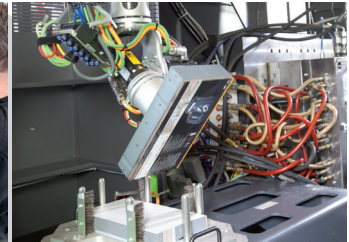
Consulting



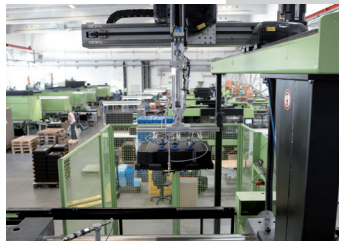
Development



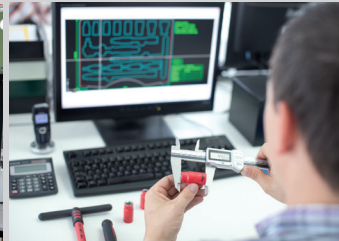
Toolmaking



In-mould labelling (IML)



Injection moulding



Inlay development



Screen- and pad-printing



Foam processing



Absolute innovation:
The patent pending TWIST-
stacking frame from W.AG!

W.AG
**FUNKTION +
DESIGN**



W.AG Funktion + Design GmbH
Wiesenweg 10
36419 Geisa, Germany

Phone + 49 (0) 36967.6740
Fax + 49 (0) 36967.674240

E-mail: info@wag.de
www.wag.de

High stacking stability when palletising
and transporting.

Case solutions for your success.

